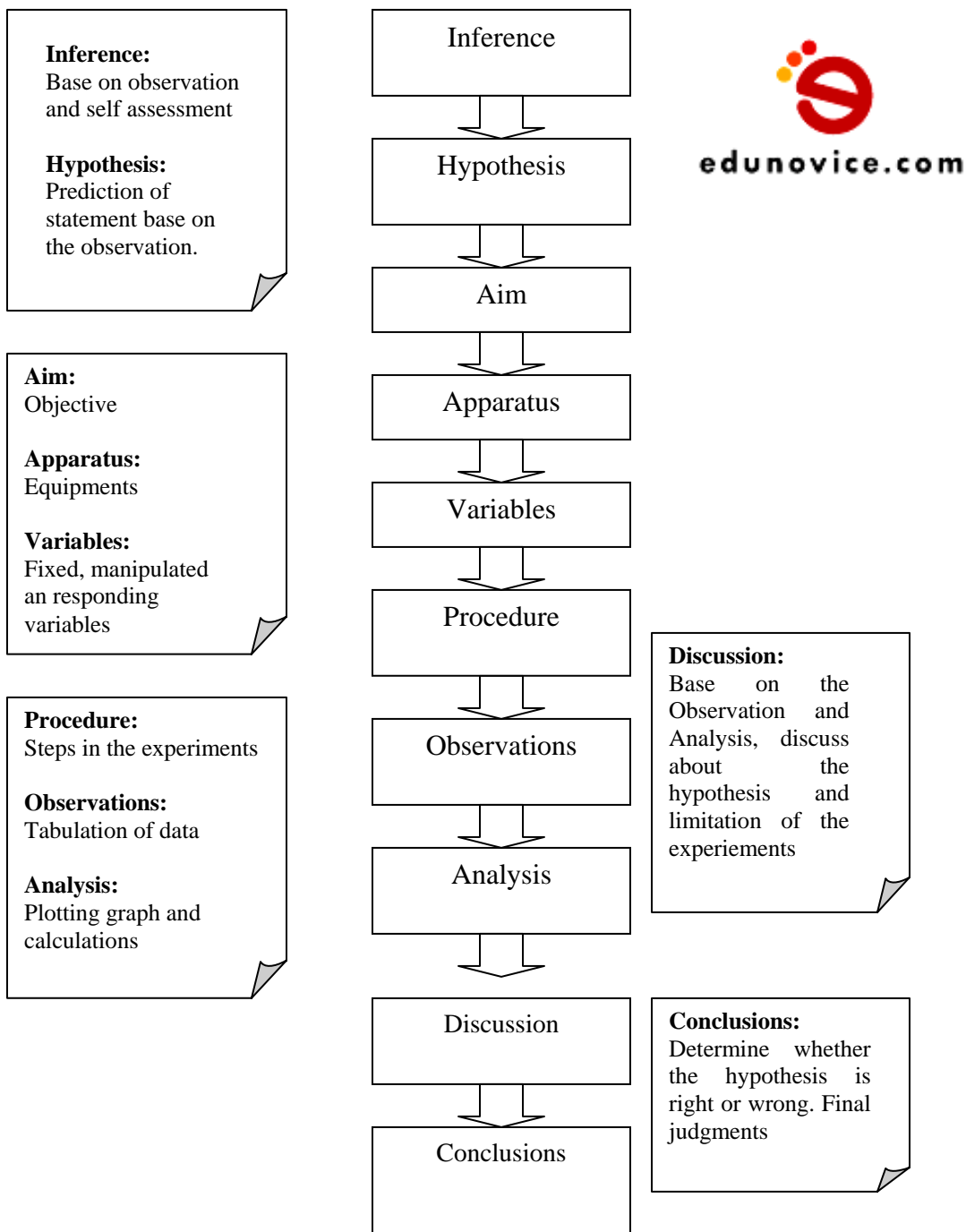


## Scientific Investigation

Process flow of Scientific Investigation.



## Graph

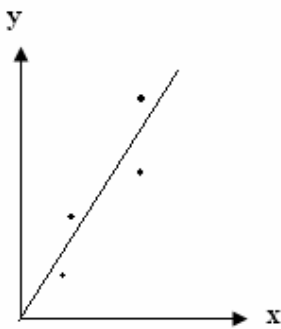


Figure 1

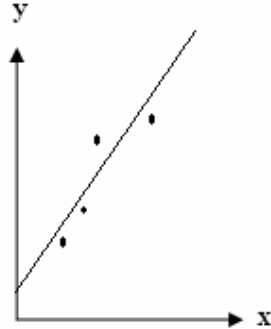
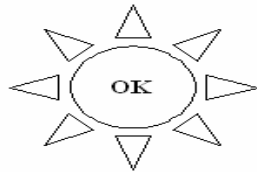


Figure 2

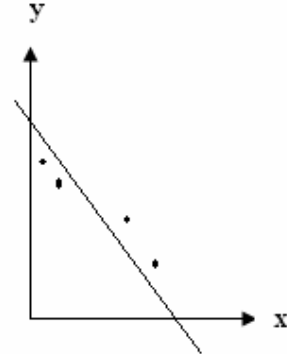
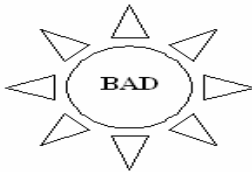


Figure 3

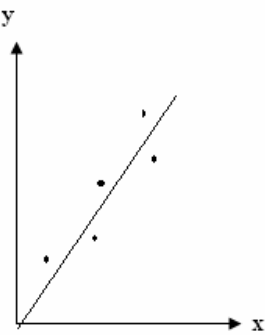
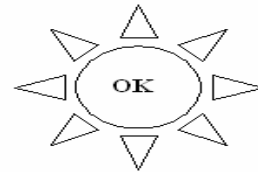


Figure 4

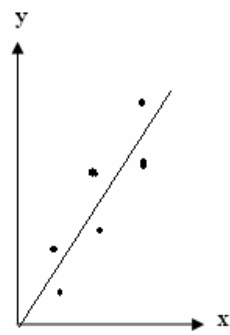
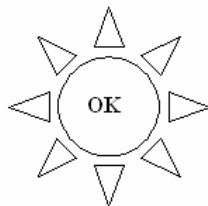


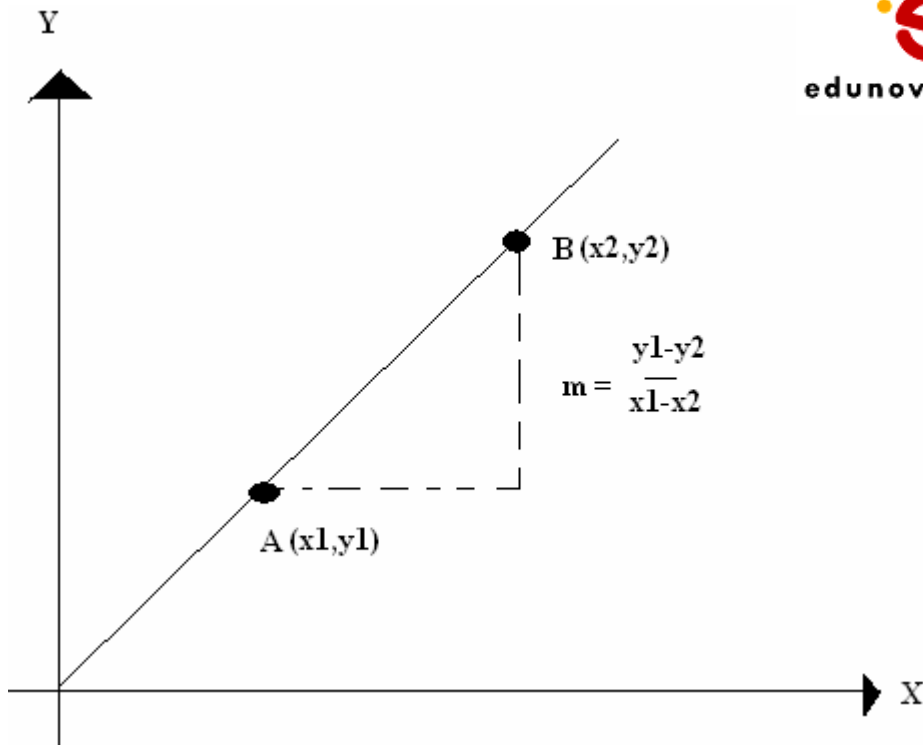
Figure 5



## Solving the Linear Equations

When solving the linear equations, it is important you guys still remember the basic of linear law which is the  $Y = mx + c$

Given two coordinate points



The slope can be calculated by using the equation

$$m = \frac{y_1 - y_2}{x_1 - x_2}$$